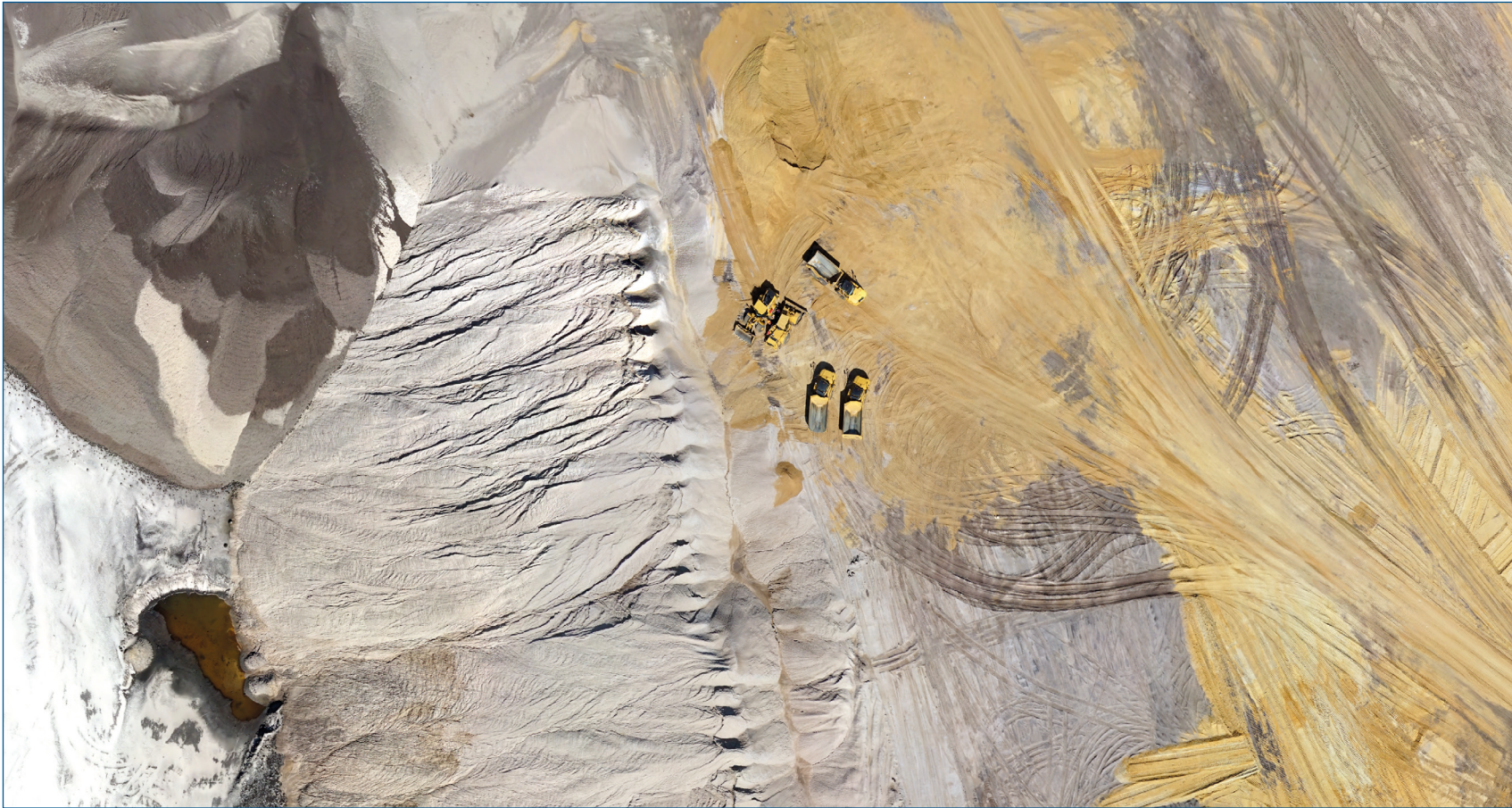


# GERMANY

SEPTEMBER 2016



Garzweiler



- Tron
- 100m AGL | 328 ft
- 23 min
- 0,22 km<sup>2</sup>  
22 ha | 0.08 sq.mi
- 4 m/s | 7.77 kn
- 1,3 cm | 0.51 inch
- Sony DSC-RX1RM2
- 543
- Side 50%  
Forward 60%

The Garzweiler opencast mine is an opencast lignite mine of RWE Power (until 2003 of RWE Rheinbraun AG) in the northern Rhenish lignite mining district. The lignite is deposited in three seams, which together are 40 metres thick on average. The coal lies between 40 and a maximum of 210 meters below the earth's surface. It is used exclusively for power generation in the nearby power plants. To expose the lignite, the Garzweiler open-cast mine moves a good 140 million cubic meters of overburden, i.e. loess, gravel and sand, every year. This quantity is mainly used to fill already carburized areas of the opencast mine. Large parts of the Frimmersdorf / Garzweiler extraction field have already been completely recultivated.

