



VECTOR™ eVTOL FIXED-WING

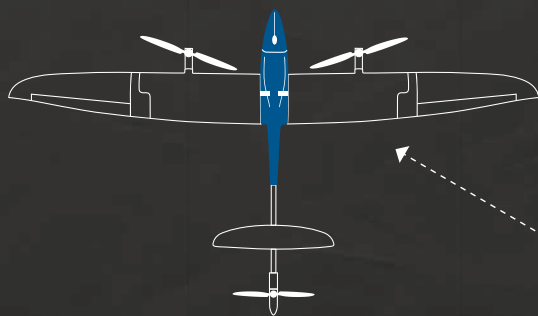


SCORPION™ TRI-COPTER



Both systems share these specifications:

- 15+ km command & control range
- Electric Vertical Take-off and Landing (eVTOL)
- Made for harsh environmental conditions (-20 °C to +45 °C)
- AES256bit encrypted data and mission link
- Small footprint (operation by one person)
- Glass fiber and kevlar honeycomb sandwich airframe



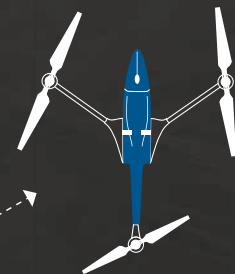
Vector™

- < 6 kg take-off weight
- 120 minutes flight time
- 15 - 20 m/s cruise speed
- 12 m/s wind speed
- 2.80 m wingspan



Centerpiece

- EO/IR gimbal
- Mesh IP encrypted data link
- Quantum-Systems autopilot



Scorpion™

- < 5 kg take-off weight
- 45 minutes flight time
- 0 - 15 m/s cruise speed
- 10 m/s wind speed
- 0.85 m wingspan



ISR AND SECURITY APPLICATIONS

Vector and Scorpion deliver relevant and timely information from the air and support decision making in intelligence, surveillance, reconnaissance (ISR) and other security applications such as

- Search and Rescue
- Convoy protection
- Traffic investigation
- Criminal pursuit
- Battlefield monitoring
- Harbour, facility and asset protection

All of our systems are available in an ITAR free version.

